



THEMI HILL SCHOOLS
COVID 19 HOLIDAY
GEOGRAPHY
FORM FOUR OPEN EXAMINATION
SERIES ONE

013

Time: 3 Hours

04 MAY,2020

Instructions

- A. This paper consists of section A, B and C
- B. Answer **all** questions in section A, B and **two (2)** questions in section C
- C. Map extract of **MALAMPAKA** (sheet number **49/1**) is provided.
- D. Credit will be given for the use of relevant sketch maps and diagrams.
- E. Do not use Calculators and cellular phones in this exam.
- F. Write your **Examination Number** on every page of your answer booklet(s).

1. For each of the items choose the correct answer from among given alternatives and write its letter beside the item number

- i. The earth's layers sial and sima is called.....
 - a. Lithosphere
 - b. Thermosphere
 - c. Stratosphere
 - d. Hydrosphere
 - e. Atmosphere
- ii. Which of the following is not associated with earth quakes.....?
 - a. Hot spring
 - b. Richter scale
 - c. Seismograph
 - d. Body waves
 - e. Epicenter
- iii. The process in which nutrients are washed down in solution from the top layer of the soil is known as.....
 - a. Cheluviation
 - b. Eluviation
 - c. Leaching
 - d. Illuviation
 - e. Oxidation
- iv. What is a local time of Morogoro –Tanzania 45°E when it is noon at Kigali Rwanda 30°E
 - a. 6:28 a.m.
 - b. 1:00 p.m.
 - c. 6:28 p.m.
 - d. 1:00 a.m.

- e. 10:00 a.m.
- v. The temperature of Tanga 950 meters above the sea level is 24°C . What is the temperature of Kilimanjaro 5895 meters above mean sea level?
 - a. 34°C
 - b. -5.67°C
 - c. 18.15°C
 - d. -10.24°C
 - e. 32°C
- vi. A very large basin – shaped depression surrounded by steep sides which forms at the top part of a volcano is known as;
 - a. Cone
 - b. Crater
 - c. Caldera
 - d. Dam
 - e. Vent
- vii. Which among the following features are not resulting from faulting?
 - a. Block mountains
 - b. Rift valley
 - c. Escarpment
 - d. Crest
 - e. Faulting scarp
- viii. The old stage of the long profile of a river is characterized by the following features except
 - a. Levees
 - b. Ox-bow lake
 - c. Delta
 - d. Braided channel
 - e. Pot holes

ix. The change of soil into alkalinity and acidity is measured by

- a. Soil PH
- b. Soil plate
- c. Soil chemo
- d. Soil structure
- e. Soil profile

x. A Stevenson's box is painted with white color in order to.....

- a. Be seen clearly
- b. Allow the movement of air
- c. Reflect the light energy
- d. Allow the thermometer to placed inside
- e. Decorate it

2. Match the items in **List A** with the response in **List B** by writing the letter of the correct response beside the item number.

List A	List B
(i) The pattern that resembles a tree with a trunk and its branches and the river confluences form accordant junction.	(a) Parallel drainage pattern
	(b) Dendritic drainage pattern
(ii) The pattern is formed by rivers that flow out of a central area in all direction.	(c) Rectangular pattern
(iii) The minor tributaries too join the major tributaries at right angle.	(d) Trellised drainage pattern
(iv) The drainage pattern in which rivers flow	(e) Rectilinear pattern

from all directions into a common inland basin.	(f) Radial drainage pattern
(v) The pattern with a series flowing in a spiral way forming concentric curves particularly on the flanks of the dissected dome.	(g) Annual drainage pattern
	(h) Centripetal pattern
	(i) Accordant drainage
	(j) Discordant drainage

SECTION B (55 MARKS)

Answer all questions in this section

3. Carefully Study the following data below and then answer the questions that follow

YEAR	PRODUCTION
2005	346
2006	255
2007	281
2008	335

- Draw a divergent bar graph to represent the data above of production from 2005 to 2008.
 - Explain the usefulness of a divergent bar graph over the other types of graph.
 - Provide the advantages and disadvantages of the method you have used to represent data.
 - Comment on the trends of production
4. A) explain with diagrams **six (6)** equipment used in chain survey

- b) What are the main purposes of conducting chain survey?
5. a) Define hypothesis
- b) Differentiate null hypothesis from alternative hypothesis
- c) Mention the differences between questionnaire and interview
6. You have given a map of **MALAMPAKA** sheet number **49/1** observe it carefully and answer those questions
- a. Calculate distance of the road in Km from grid reference 630474 to 560544.
- b. Determine **three (3)** factors that influenced the population distribution of MALAMPAKA town.
- c. Determine **four (4)** economic activity taking place in that map with reasons.
- d. Comment on the nature of the settlement pattern.
7. Carefully study the photograph below and then answer the questions that follow:



- (a) With vivid reasons suggest the type of photograph above.
- (b) With the aid of evidences, state the scale of a photograph.
- (c) Explain the climatic condition that predominant on the above photograph.
- (d) Name the type of tribe presented on the photograph.
- (e) What are the main activities performed by the tribe mentioned in (d) above.

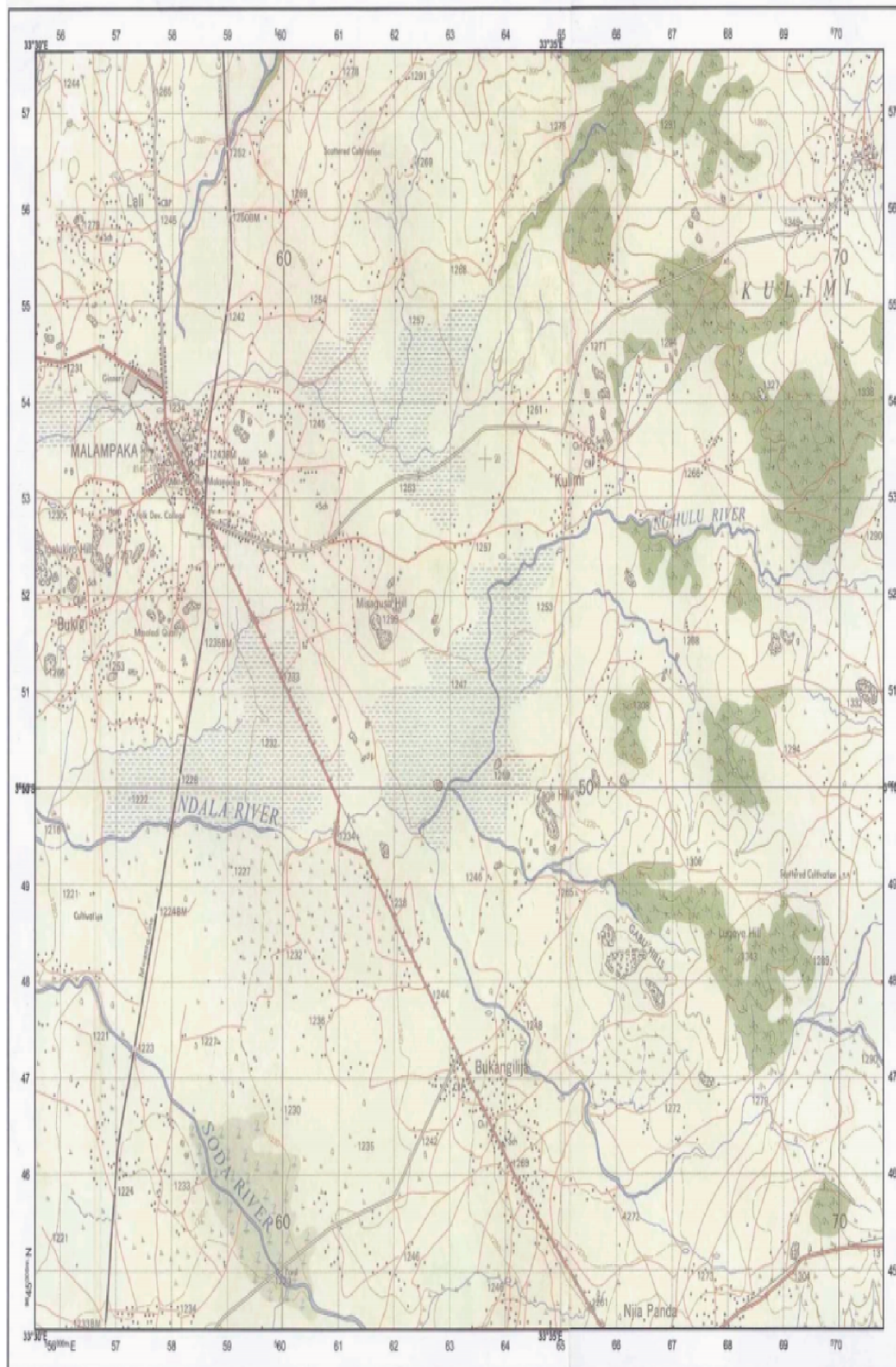
SECTION C (30 Marks)

Answer **two (2)** questions from this section.

8. Despite the decline of the trend of birth rates at a global level, the global population is ever increasing. Discuss
9. Suggest eight ways that may be adopted to solve the problems facing forestry in Tanzania.
10. Examine the eight factors which lead to the growth of settlements in different parts of a country.

THEM HILL SECONDARY SCHOOL

Taking all precautions covid 19 is still there and it is very dangerous



MALAMPACA Sheet 49/1

Town or area with permanent buildings	
Other populated area, Houses	
All Weather Road Bound Surface	
All Weather Road Loose Surface	
Dry Weather Road	
Main Track (Motorable)	
Other Track and Footpath	
Cut Line	
Railway, Siding, Station, Level Crossing	
Airfield Runway	
Telephone Line	
Power Line	
Crater	
Steep Slope	
Spot Heights (in metres)	
Contours (1:20m)	
Air Photo Principal Point with Film No.	
Watercourse, Waterfall, Rapids, Dam	
Watercourse (Wide), Waterfall, Rapids	
Water Tank, Windpump	
Borehole, Waterhole, Well, Spring	
Bund, Major Fence, Hedge, Wall	
Cliff	
Forest	
Thicket	
Bamboo	
Riverine Trees	
Plantation (Coffee C, Sisal S, Sugar Su, Palm P, Wattle W, Cashew Nut CN)	
Woodland	
Scrub	
Scattered Trees	
Palms	
Mangrove Swamp	
Tree Swamp	
Papyrus Swamp, Marsh, Bog	
Seasonal Swamp	
Sand or Mud Inland Coastal	
Outcrop Rock	
Coral	
ABBREVIATIONS	
CBP Cotton Buying Centre	MI Mission
CH Church	MR Market
CHH Court House	MRH Mosque
Disp Dispensary	PO Post Office
Hosp Hospital	PP Police Post
	Tg Telegraph
	PS Police Station
	RH Rest House
	Sch School
	Telephone
	Telegraph
Scale 1:50,000	
HEIGHTS IN METRES	
Extract from Malampaka Sheet 49/1	
Series Y742, Edition 2: TSDI Ministry of Lands	
Government of the United Republic of Tanzania 1994	